

IP Single Lens LPR Camera /Global Shutter



IP / Single Lens / Global Shutter / OnVif
Quadruple Stream / Outdoor / IP68 / 3.1MP

IP Single Lens LPR camera assists law enforcement, parking and other authorities to track and capture license plates. Rated IP68 and nitrogen-filled to operate and withstand the harshest conditions

The high power LED detect virtually all kinds of reflective and non-reflective license plates.
IP-based using OnVif for effective interoperability. Power-over Ethernet (POE) interface allows a single wire connection for both data Transfer and power transmission.

Global Shutter supports to capture the number plate without distortion while high speed.
It has the strobe out that can synchronize with the external LED and it can enlarge the application of LPR camera.

Key Features

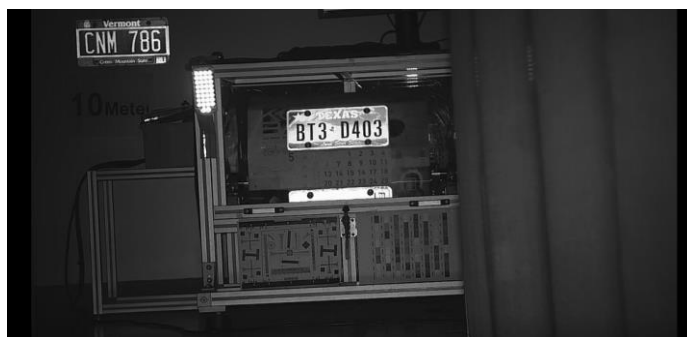
- **1/1.8" Global Shutter CMOS**
- Max. 30fps @ 3M (2048x1536)
- Triple stream (H.265, H.264, M-JPEG, JPEG)
- **IR LED Strobe-Out (TTL 3.3V) – Optional**
- ONVIF (Profile S) standard
- IP 68 rated, Nitrogen filled-in
- 855nm 4 Power IR LED
- Compact size to install

Application



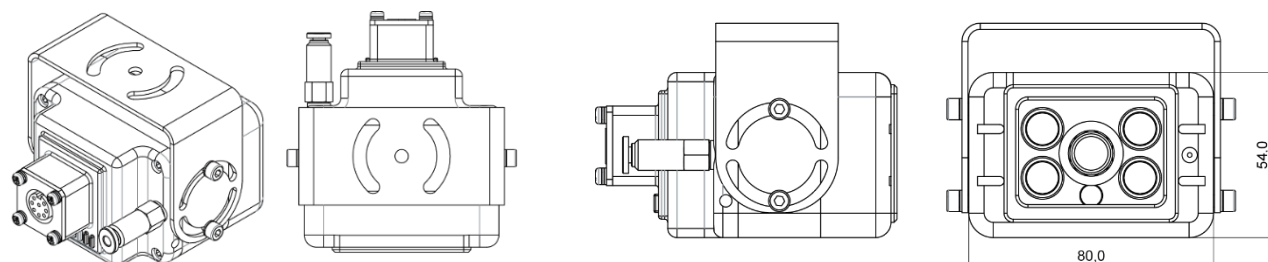
Specification

CAMERA		NETWORK	
Image Sensor	3MP 1/1.8" Sony IMX265 Global Shutter CMOS Sensor	LAN	10/100-base-T (auto sensing)
Lens	8mm, 16mm or 25mm Lens	Protocol	HTTP, RTP/RTSP(Uni/Multicast), TCP/IP(v4/v6), UDP, FTP, Telnet, HTTPS, RARP, PPPoE, SNMP, PAP, CHAP, DHCP, NTP, SMTP client, uPnP & etc
Number of Effective Pixels	2064(H) x 1554(V) approx. 3.18 M pixels		
Streaming	Quadruple Streaming		
Compression	H.265, H.264, M-JPEG, JPEG	Standard	ONVIF (Profile S)
Resolution	30fps @ 2048x1536, 1920x1080, 1280x1024, 1280x720	Viewer	Browsers (Microsoft Internet Explorer), VLC
Max. Frame Rate	30fps, 25fps	Security	IP Filtering, HTTPS, Encrypted & Basic Authentication, Management White List
Bit Rate Control	VBR, CBR (H.264 only, 32K~12Mbps)		
Frequency Control	60hz, 50hz	OPERATION ENVIRONMENTS	
Privacy Masking	8 privacy zone	Operating Humidity	0~80% (non-condensing)
Motion Detection	On (144 block selection), Off	Operating Temperature	-10℃~+70℃
Day & Night	Support TDN (Auto, B&W, Off)	IR LED Strobe-Out	Optional [Active High (TTL 3.3V)]
White Balance	Auto, Manual	Power	IEEE 802.3af, PoE, 48VDC (MAX 57VDC)
Image Adjustment	Hue, Saturation, Brightness, Contrast	Power Consumption	Max 4.8W
Sharpness	Level 0~255		
Auto Gain Control	Level 1~500		
Shutter Speed	Auto, Manual (1/30~1/24000)		
Sense-up	Level 0~5		
Flip	Vertical (On, Off), Horizontal (On, Off)		



Dimension

< Tested at 100mile using the speed testing machine >



Options for IP Single Lens LPR Camera

Strobe-out	Lens		Model Name
Without Strobe-Out	Low Distortion Lens	12mm	GPCL-120LA4GN
		16mm	GPCL-160LA4GN
		25mm	GPCL-250LA4GN
With Strobe-Out	Low Distortion Lens	12mm	GPCL-120LA5GN
		16mm	GPCL-160LA5GN
		25mm	GPCL-250LA5GN

Magnet mounting bracket (Optional Item)

GMMB-100S

