

# IP Single Lens LPR Camera /Global Shutter

GPCL-080A4GN (8mm Lens)  
GPCL-160A4GN (16mm Lens)  
GPCL-250A4GN (25mm Lens)



## IP / Single Lens / SONY Global Shutter / OnVif Quadruple Stream / Outdoor / IP68 / 3.1MP

IP Single Lens LPR camera assists law enforcement, parking and other authorities to track and capture license plates. Rated IP68 and nitrogen-filled to operate and withstand the harshest conditions

The high power LED detect virtually all kinds of reflective and non-reflective license plates.  
IP-based using OnVif for effective interoperability. Power-over Ethernet (POE) interface allows a single wire connection for both data Transfer and power transmission.

Global Shutter supports to capture the number plate without distortion while high speed.  
It has the strobe out that can synchronize with the external LED and it can enlarge the application of LPR camera.

### Key Features

- 1/1.8" SONY IMX265 Global Shutter CMOS
- Ambarella SoC
- Max. 30fps @ 3M (2048x1536)
- Quadruple stream (H.265, H.264, M-JPEG, JPEG)
- IR LED Strobe-Out (TTL 3.3V) – Optional
- ONVIF (Profile S) standard
- IP 68 rated, Nitrogen filled-in
- 755nm 4 Power IR LED
- Compact size to install

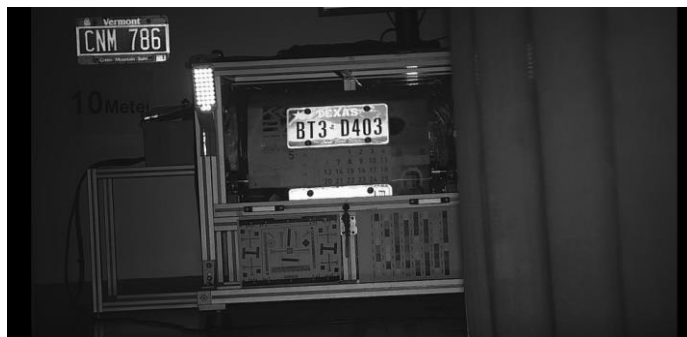
### Application



## Specification

CAMERA	
Image Sensor	3MP 1/1.8" Sony IMX265 Global Shutter CMOS Sensor
Lens	8mm, 16mm or 25mm Lens
Number of Effective Pixels	2064(H) x 1554(V) approx. 3.18 M pixels
Streaming	Quadruple Streaming
Compression	H.265, H.264, M-JPEG, JPEG
Resolution	30fps @ 2048x1536, 1920x1080, 1280x1024, 1280x720
Max. Frame Rate	30fps, 25fps
Bit Rate Control	VBR, CBR (H.264 only, 32K~12Mbps)
Frequency Control	60hz, 50hz
Privacy Masking	8 privacy zone
Motion Detection	On (144 block selection), Off
Day & Night	Support TDN (Auto, B&W, Off)
White Balance	Auto, Manual
Image Adjustment	Hue, Saturation, Brightness, Contrast
Sharpness	Level 0~255
Auto Gain Control	Level 1~500
Shutter Speed	Auto, Manual (1/30~1/24000)
Sense-up	Level 0~5
Flip	Vertical (On, Off), Horizontal (On, Off)

NETWORK	
LAN	10/100-base-T (auto sensing)
Protocol	HTTP, RTP/RTSP(Uni/Multicast), TCP/IP(v4/v6), UDP, FTP, Telnet, HTTPS, RARP, PPPoE, SNMP, PAP, CHAP, DHCP, NTP, SMTP client, uPnP & etc
Standard	ONVIF (Profile S)
Viewer	Browsers (Microsoft Internet Explorer), VLC
Security	IP Filtering, HTTPS, Encrypted & Basic Authentication, Management White List
OPERATION ENVIRONMENTS	
Operating Humidity	0~80% (non-condensing)
Operating Temperature	-10°C~+70°C
PoE	Support
IR LED Strobe-Out	Optional [Active High (TTL 3.3 V)]
Power	PoE
Power Consumption	Max 4.8W



## Dimension

< Tested at 100mile using the speed testing machine >

