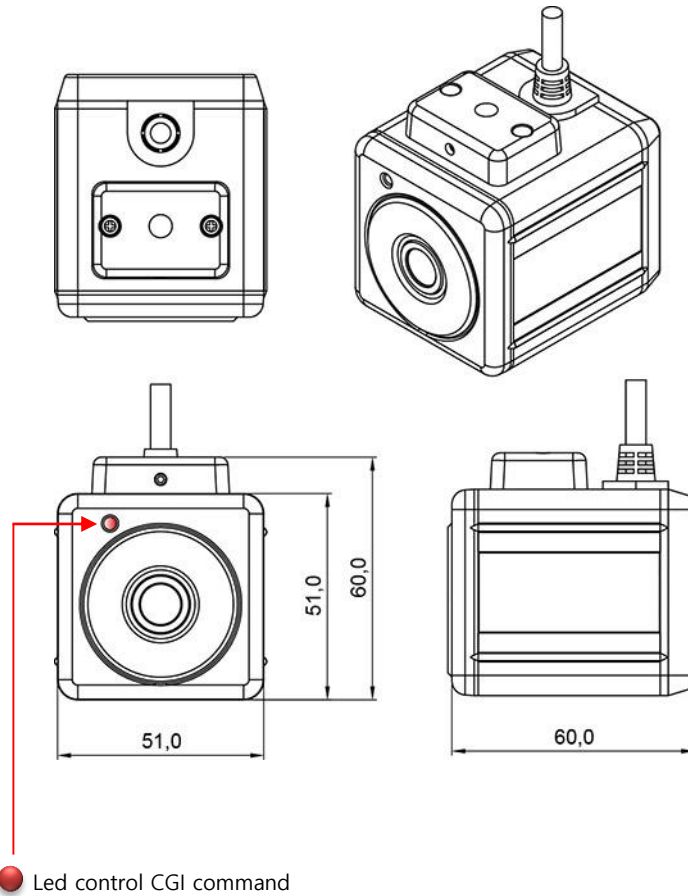


# Front IP Camera



# Front IP Camera Dimension



Front led control

<http://192.168.0.100/basic.cgi?root.rtsp.ledmode=0> - LED Off

<http://192.168.0.100/basic.cgi?root.rtsp.ledmode=1> - LED On

<http://192.168.0.100/basic.cgi?root.rtsp.ledmode=2> - LED Blink



# Default IP Address

---

Factory default value of IP camera is like below.

- **IP : 192.168.0.100**
- **SM : 255.255.255.0**
- **GW : 192.168.0.1**

When you connect IP camera and PC directly, please assign the IP address of PC by choosing any numbers from 2 to 254 except "100" as shown below.

- **IP : 192.168.0.150**
- **SM : 255.255.255.0**
- **GW : 192.168.0.1**

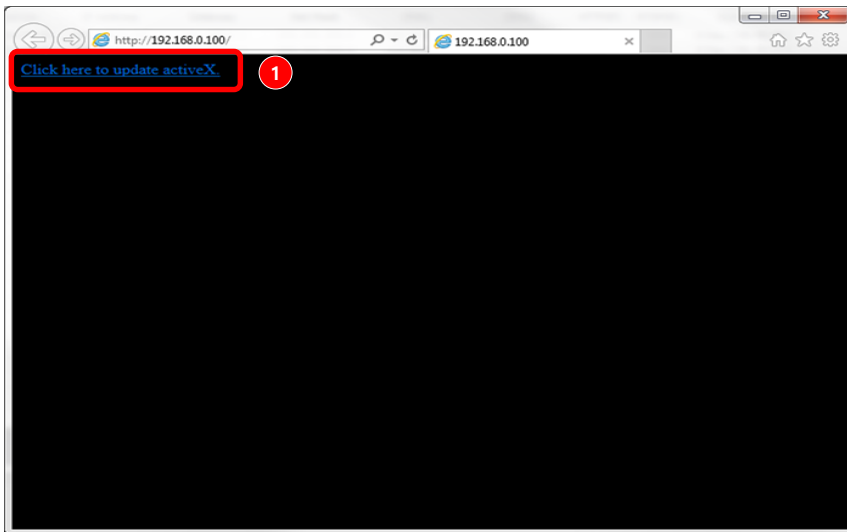
After connection, allow to install ActiveX (Web Live Player software) on PC. For the installation of ActiveX, please refer to the following page.

※Available OS : XP, VISTA, WIN 7/8/10(32/64bit)

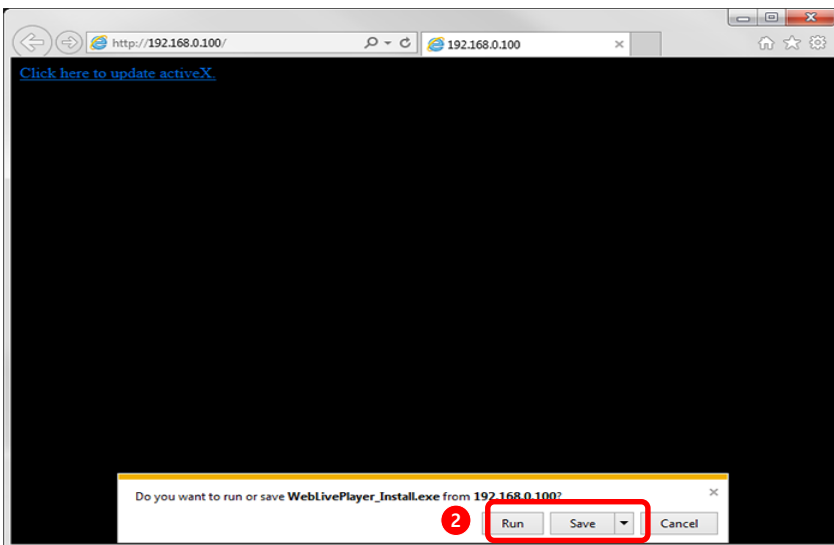
# ActiveX Installation

---

## ActiveX(Web Live Player) Installation



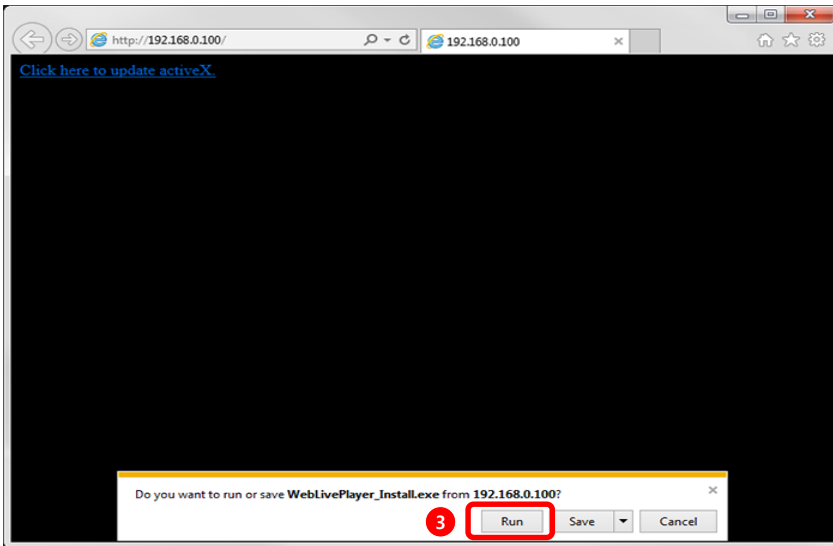
- 1 Click "Click here to install Web Live Player".



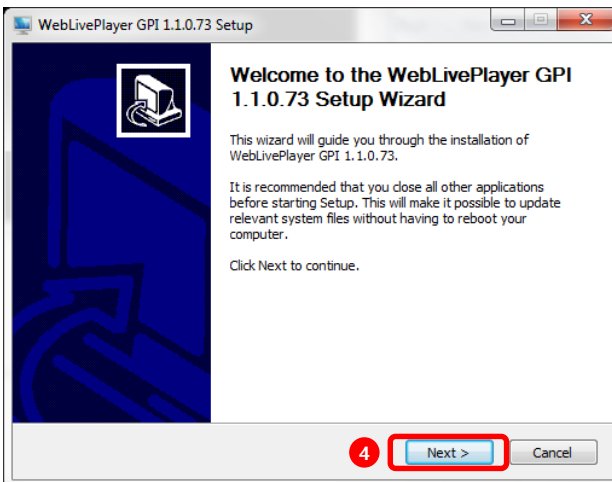
- 2 Click 'Run' to download or click 'Save' to download and save Web Live Player to your PC.

# ActiveX Installation

---



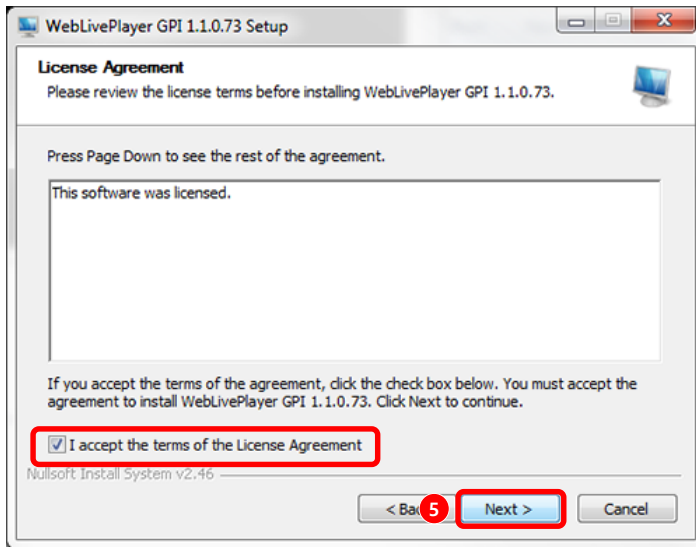
- 3 Click "Run" to directly install Web Live Player.



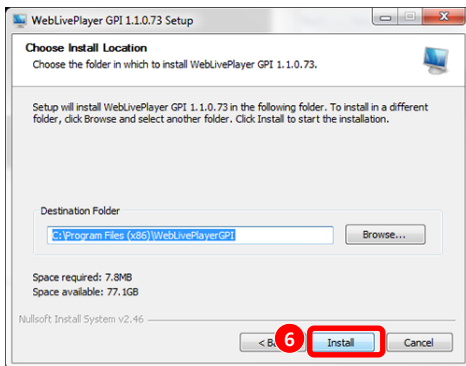
- 4 Click the 'Next' button.

# ActiveX Installation

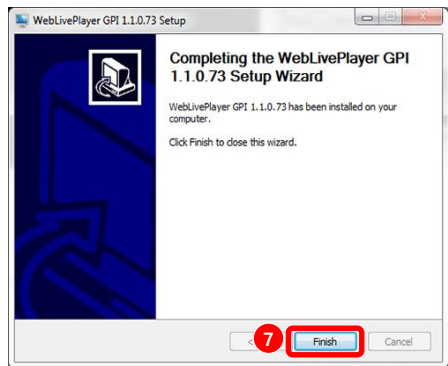
---



- 5 Check on Agreement message and click 'Next' button.



- 6 Click the 'Install' button.



- 7 Click 'Finish' to complete the installation.

# LOGIN

---

Input IP address of IP camera on web(Internet Explorer)



Input User ID, Password and click “Login” button.

- 1 User ID : User’s Account Name
- 2 Password : User’s Secret Number
- 3 Login : After input User ID & Password, click ‘Login’.

Default ID & PW

- User ID : **admin**
- Password: **admin**

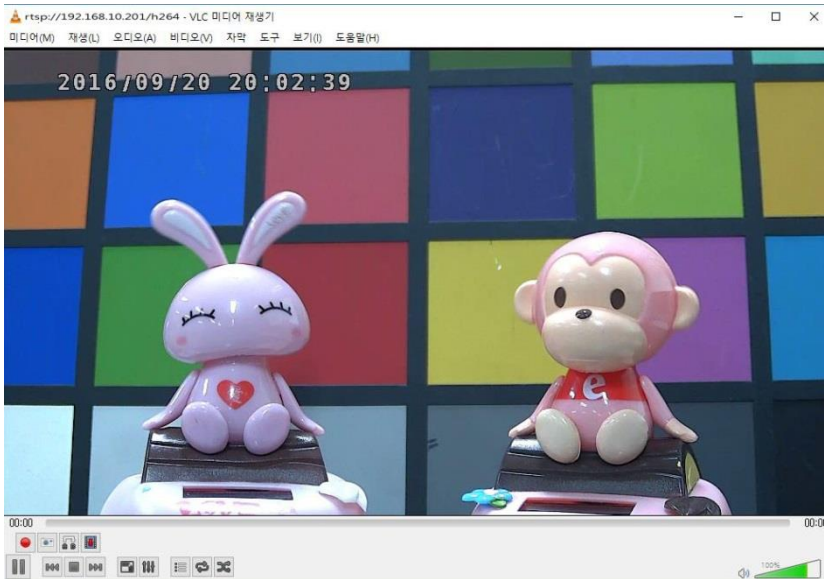


# RTSP

## Vlc Media Player

H.264 Main streaming : rtsp://192.168.0.102/h264

H.264 Sub Streaming : rtsp://192.168.0.102/hsb



## Onvif Device Manager

ID: admin , password: admin

